

Pointhouse

GIULIA

Design Pointhouse

Scheda tecnica
/Technical sheet



Sedia in tubolare metallico a sezione rettangolare con seduta imbottita, rivestita in ecopelle o tessuto

Giulia è la sedia perfetta per la zona living, grazie alle gambe in metallo abbinabili alle strutture dei tavoli e alla seduta imbottita in ecopelle e tessuto. Semplicità e versatilità la rendono una sedia adatta anche a spazi pubblici come ristoranti o bar.

Disponibile con due diverse altezze di schienale, H 95 cm e 87 cm.

/ Chair with rectangular section tubular structure and upholstered seat, covered with similar leather or fabric

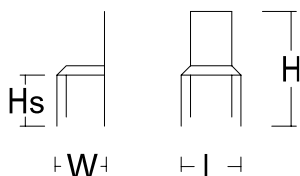
Giulia is the perfect chair for the dining table, thanks to the metallic legs that can be matched with the same finish as the table's, and similar leather or fabric upholstered seat. Simplicity and versatility make this chair suitable also for public spaces like restaurants or bars.

Available in two different heights, H 95cm and 87cm.

MISURE / SIZE:

GIULIA BASSA **L.40XW.39XHS.46XH.87**

GIULIA ALTA **L.40XW.43XHS.46XH.95**



PESO & IMBALLO / WEIGHT & PACKING:



Numero colli
Boxes number

GIULIA BASSA

Box: 96x51x63
pcs. 2
m3 0,313
tot. Kg. 13,6

GIULIA ALTA

Box: 100x51x63
pcs. 2
m3 0,321
tot. Kg. 14,2

FINITURE / FINISHES:

Struttura e gambe / Structure and legs:

Metallo verniciato
Painted metal

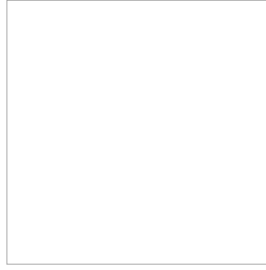
*Solo per fusto Eva 1 ed Eva 4
Only for Eva 1 and Eva 4 structures



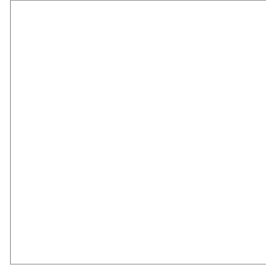
06 GHISA
CAST IRON



02 GRIGIO ALLUMINIO
ALUMINIUM GREY



04 BIANCO LUCIDO
POLISH WHITE



06 BIANCO OPACO
MATT WHITE



07 NERO OPACO
MATT BLACK



15 GRAFITE OPACO
MATT GRAPHITE



18 GRIGIO SILVER
SILVER GREY



22 TORTORA
DOVE GREY



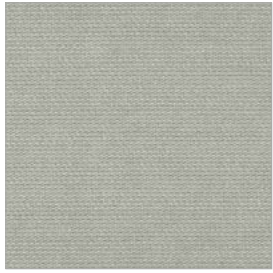
0P GRIGIO PIOMBO OPACO
MATT LEAD GREY

FINITURE / FINISHES:

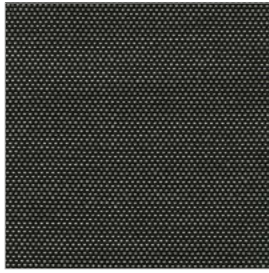
Seduta / seat:

Tessuto / Ecopelle / Pelle
Fabric / Similar leather / Leather

Tessuto Angel Trick / Angel Trick fabric



T101



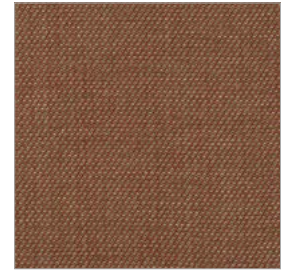
T221



T301



T302



T303



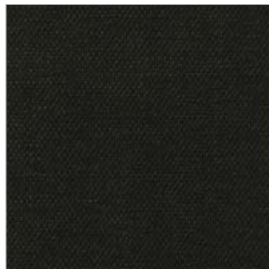
T304



T306



T400



T406



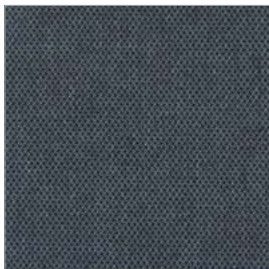
T701



T702



T703



T704



T801



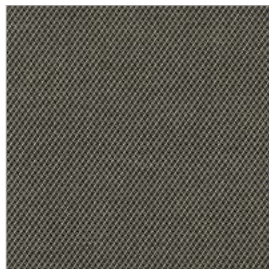
T803



T204



T405



T602



T900



abitex

abitex srl
via del cristo 84
33044 manzano
ud - italy

t +39 0432 746060
www.abitex.eu
info@abitex.eu

angel trick 08163



IT

codice doganale

54072011.

utilizzo

tende, imbottiti.

caratteristiche

100% polipropilene, altezza cm \pm 140,
peso \pm 350 gr/m².

tintura

il prodotto é tinta in massa.

lunghezza pezze

circa 35 mtl.

abrasione

50.000 cicli, ISO 12947-2.

solidità alla luce

4-5, ISO 105 B02.

solidità allo sfregamento

secco 5, umido 4/5, ISO 105 X12.

resistenza alla cucitura

ordito 3 mm, trama 2 mm, ISO 13936-2.

pilling

4-5, ISO 12945-2.

resistenza al fuoco

1IM - UNI 9175; EN 1021 1/2; BS 5852 crib 5;
NF D 60 013; California TB 117-2013;
IMO FTP Code 307 part 8.

attenzione

sono ammesse leggere differenze di colore tra differenti partite.

EN

customs code

54072011.

use

curtains, upholstered furniture.

features

100% polypropylene, width cm \pm 140,
weight \pm 350 g/m².

dyeing

solution dyed product.

roll length

approx. 35 lm.

abrasion resistance

50.000 rubs, ISO 12947-2.

colour fastness to light

4-5, ISO 105 B02.

fastness to rubbing

dry 5, wet 4/5, ISO 105 X12.

seam slippage

warp 3 mm, weft 2 mm, ISO 13936-2.

pilling

4-5, ISO 12945-2.

fire resistance

1IM - UNI 9175; EN 1021 1/2; BS 5852 crib 5;
NF D 60 013; California TB 117-2013;
IMO FTP Code 307 part 8.

attention

slight colour differences between different batches are allowed.



fireproof



imo-med

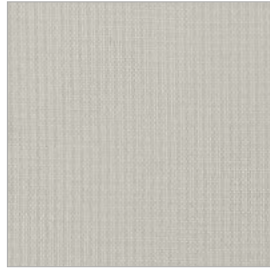
Tessuto Flash Nativa /Flash Nativa fabric



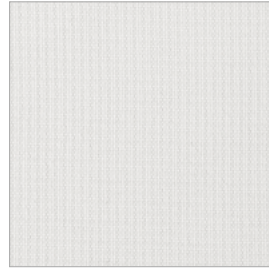
F001



F002



F101



F111



F200



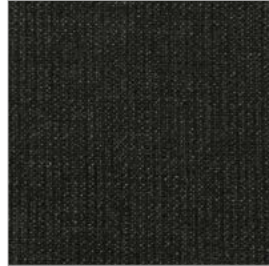
F300



F301



F305



F403



F500



F601



F700



F705



F707



F800



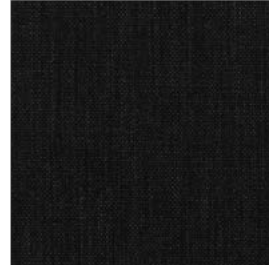
F804



F402



F600



F602



abitex

abitex srl
via del cristo 84
33044 manzano
ud - italy

t +39 0432 746060
www.abitex.eu
info@abitex.eu

flash nativa

08091



IT

codice doganale

54072011.

utilizzo

imbottiti.

caratteristiche

100% polipropilene, altezza cm \pm 140,
peso \pm 320 gr/m².

tintura

il prodotto é tinta in massa.

lunghezza pezze

circa 35 mtl.

abrasione

> 70.000 cicli, ISO 12947-2.

solidità alla luce

4-5, ISO 105 B02.

solidità allo sfregamento

secco 5, umido 4/5, ISO 105 X12.

resistenza alla cucitura

ordito 3 mm, trama 3 mm, ISO 13936-2.

pilling

4-5, ISO 12945-2.

attenzione

sono ammesse leggere differenze di colore tra differenti partite.

EN

customs code

54072011.

use

upholstered furniture.

features

100% polypropylene, width cm \pm 140,
weight \pm 320 g/m².

dyeing

solution dyed product.

roll length

approx. 35 lm.

abrasion resistance

50.000 rubs, ISO 12947-2.

colour fastness to light

4-5, ISO 105 B02.

fastness to rubbing

dry 5, wet 4/5, ISO 105 X12.

seam slippage

warp 3 mm, weft 3 mm, ISO 13936-2.

pilling

4-5, ISO 12945-2.

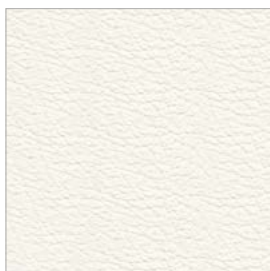
attention

slight colour differences between different batches are allowed.

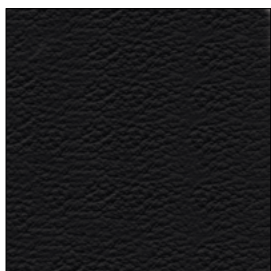
Ecopelle / Similar leather

E' un tessuto che ha l'aspetto della pelle o del cuoio ma non è realizzato con materiale animale. Esso è composto da tessuto su cui viene spalmato del materiale plastico (poliuretano o poliammide) per simulare la superficie del pellame, ciò ne determina una facile pulizia ed impermeabilità.

It is a fabric that has the look of leather but it is not realized with animal material. This is composed by a fabric on which is spread some plastic material (polyurethane or polyamide) to create the leather surface, that makes it easy to clean and waterproof.



48 BIANCO
WHITE



49 NERO
BLACK



50 TABACCO
TOBACCO



51 BLU
BLUE



52 TESTA DI MORO
DARK BROWN



53 CEMENTO
CEMENT



54 GRAFITE
GRAPHITE



55 CRETA
TAUPE



56 PIOMBO
OLIVE GREY



57 BORDEAUX
BORDEAUX



58 ROSSO
RED